

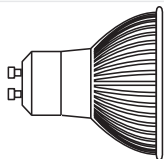
Fitting/replacing bulbs (Max. 7W LED GU10)

When changing a bulb, always switch off at the mains and allow the bulb to cool before handling. Dispose of used bulbs carefully.

Do not exceed the wattage stated or use a different shape bulb from that indicated on the fitting.

To access the bulb, unscrew the lamp covers. Turn the bulb one quarter turn anticlockwise and remove. Push the new bulb gently into the lampholder and twist a quarter turn clockwise to engage pins. Finally, refit the lamp covers. Screw on tightly to maintain IP protection.

Max. 7W LED GU10



Technical data

Supply Voltage: 220-240 V~, 50 Hz

Bulb Type: 3 x Max. 7W LED GU10 (required)



Conformity with all relevant UKCA Directive requirements.



Conformity with all relevant EC Directive requirements.



This light fitting is Class 1 and must be earthed.



Waste electrical products should not be disposed of with household waste. Please recycle where facilities exist. Check with your Local Authority or local store for recycling advice.



This product is suitable for dimming.

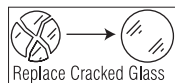


This product is rated at IP44.

Care and Safety

We recommend cleaning with a soft dry cloth. Do not use solvents or abrasive cleaners as these could damage the finish.

For your safety, always switch off the power supply before cleaning.



This bulb is protected by a glass shade. This part must be replaced immediately should the glass shade become cracked or damaged. This fitting must not be used without the glass shade in place.

Instruction manual

Knight 3LT Round

81571



Thank you for purchasing this light fitting. Please read the instructions carefully before use to ensure safe and satisfactory operation of this product. Please retain these instructions for future reference.

Warning

 This light fitting is Class 1 and must be earthed.

Please read these instructions carefully before commencing any work.

This unit must be fitted by a competent and qualified electrician.

Install in accordance with the IEE Wiring regulations and current Building Regulations.

Check the pack and make sure you have all the parts listed.

To prevent electrocution switch off at the mains supply before installing or maintaining this fitting. Ensure other persons cannot restore the electrical supply without your knowledge.

If you are in any doubt, please consult a qualified electrician.

This light fitting should be connected to a fused circuit.

If replacing an existing fitting, make a careful note of the connections.

Always use the correct type and wattage bulb. Never exceed the wattage stated.

When changing a bulb, always switch off at the mains and allow the old bulb to cool down before handling. Dispose of use bulbs carefully and responsibly.

This product is suitable for dimming when used in conjunction with a dimmable lamp. Please ensure verification of dimming abilities with the lamp manufacturer prior to use.

Waste electrical products should not be disposed of with household waste. Please recycle where facilities exist. Check with your local authority or retailer for recycling advice.

Layout

Plan the desired layout of these fittings carefully, ensuring the cables will reach the distances between the junction box and the light fitting.

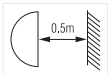
Avoid locating any cables in positions that would cause a hazard. Position cables and junction boxes (not supplied) away from areas where they may be at risk from being cut, trapped or damaged.

The mains supply cable must have a minimum cross sectional area of 1.0mm².

This product must be mounted out of arms reach.

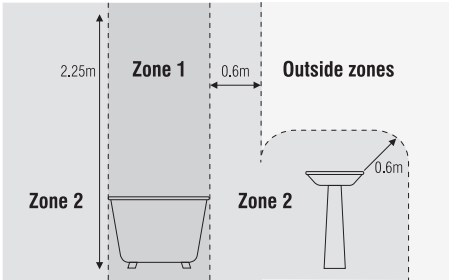
This product has special protection against the ingress of moisture.

Take care not to drill into any pipes or mains cables beneath the surface during mounting holes preparation.



Spotlights give a concentrated beam of light and must not be positioned any closer than 0.5m (50cm) to the illuminated surface.

This product is suitable for bathroom zone 1 & 2 and used in conjunction with a 30MA RCD



Installation

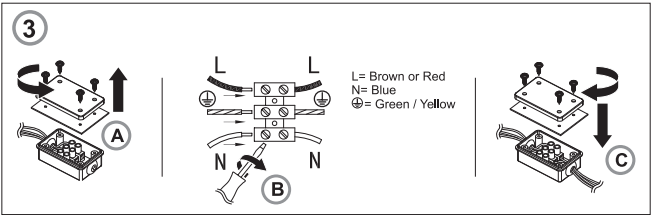
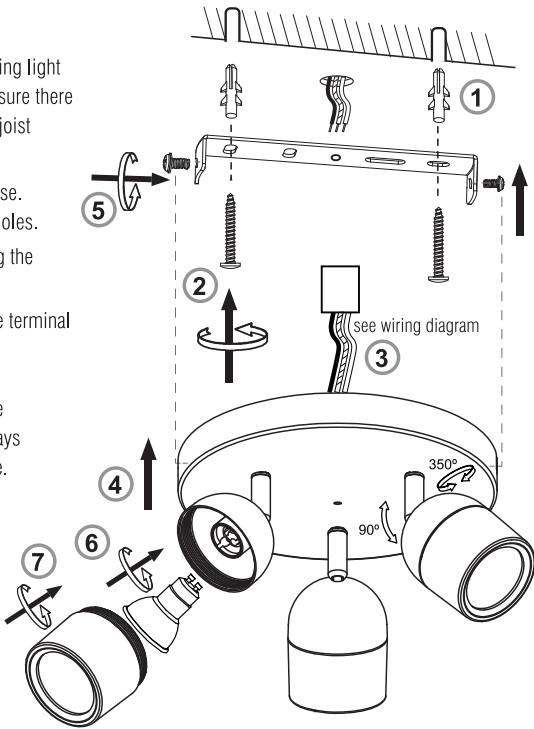
Existing fittings must be completely removed before installation of a new product. Before removing the existing fitting, carefully note the position of each set of wires.

Note that the switch is turned off before installation.

Decide on the position of the light fitting, or remove existing light fitting. Note the position of the electrical connections. Ensure there is a solid mounting surface, preferably a wooden joist or joist bridge to support the weight of the light fitting.

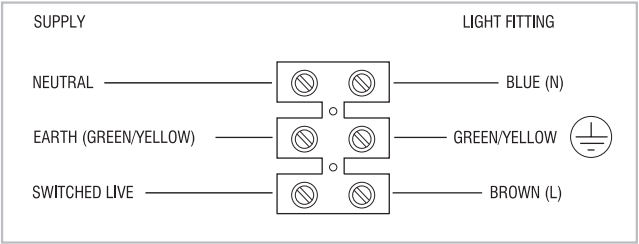
- Unscrew two side screws and retain the screws for re-use. Use the fixing bracket as a template to mark the screw holes.
- Drill the fitting holes and secure the fixing bracket using the plastic plugs and screws. Ensure the product is level.
- Support your fitting and connect the house wiring to the terminal block and wire as detailed wiring.
If there is a Ring Circuit and you do not understand the connections you must consult an electrician. Any loose terminal blocks-not secured to ceiling cup-should always be covered with 2 layers of good quality insulation tape.
- Ensuring nothing is blocking the central drain hole, secure the ceiling cup over the bracket by using the side screws removed.
- Ensuring nothing is blocking the central drain hole, secure the ceiling cup over the bracket by using the side screws removed.
- Remove the lamp covers, install the bulbs. **Never fit a bulb with a higher wattage, as this could cause over heating and damage the fitting.**

- Refit the lamp covers, ensuring the seal is tight.
- Turn on the power and test.



Wiring

Having correctly identified the wiring from your existing light fitting, pull the mains wire through the hole and connect to the connection block in the following way.



Check that...

You have correctly identified the wires. The connections are tight. No loose strands have been left out of the connection block.